

ST GEORGE
INTERNATIONAL
THE LANGUAGE
SPECIALISTS



Established 1962



Accredited by the



WWW.STGEORGES.CO.UK

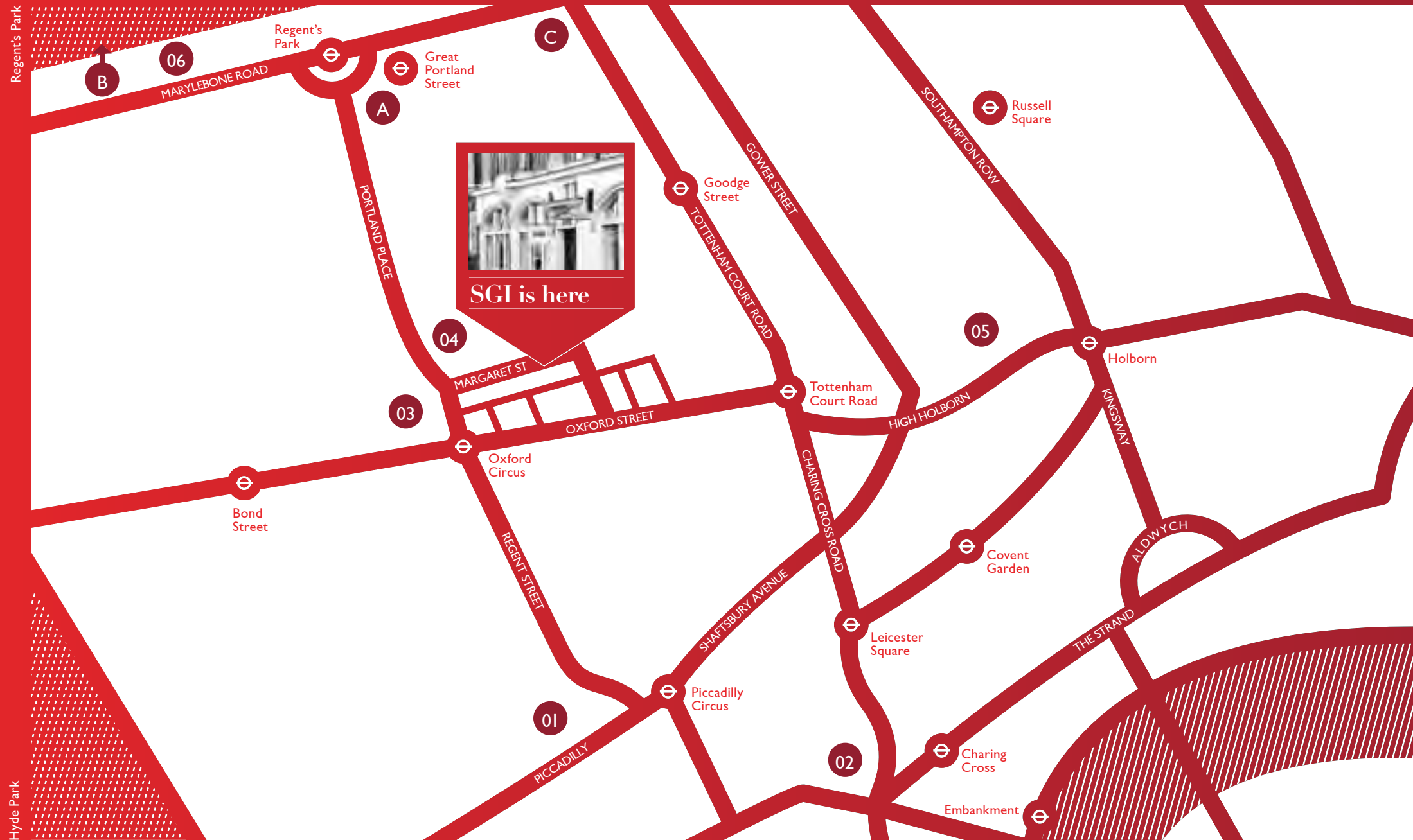
SGI is placed in the heart of the capital, the perfect location for a fullfilling London experience.

VISITOR ATTRACTIONS

- 01 Royal Academy of Arts
- 02 The National Gallery
- 03 University of Westminster
- 04 BBC
- 05 British Museum
- 06 Madame Tussauds

RESIDENTIAL ACCOMMODATION

- A International Students House
- B New Hampstead
- C Schafer House



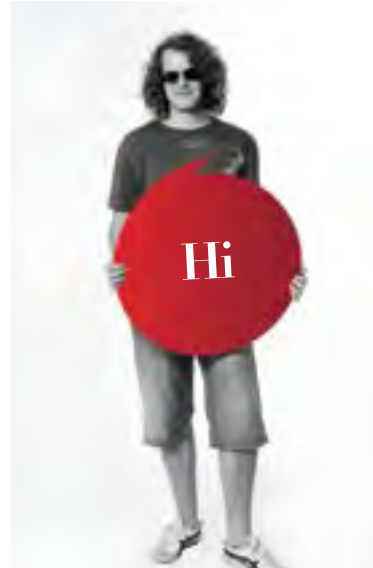
Regent's Park

Hyde Park

River Thames



05 WELCOME LETTER	27 CORPORATE LANGUAGE TRAINING COURSES
06 OUR REPUTATION FOR EXCELLENCE	28 REFRESHER COURSE FOR OVERSEAS TEACHERS OF ENGLISH
07 ASSESSING YOUR LANGUAGE LEVEL	29 TEACHER TRAINING PROGRAMMES
10 GENERAL ENGLISH	30 FOREIGN LANGUAGE COURSES
12 BUSINESS ENGLISH	31 SGI ONLINE, E-LEARNING AND COMMUNITY
16 EXECUTIVE ENGLISH	32 OXFORD AND CAMBRIDGE
18 IELTS PREPARATION COURSE	33 YOUNG LEARNER PROGRAMMES
20 UNIVERSITY FOUNDATION COURSE	35 ACCOMMODATION IN LONDON
24 EVENING COURSES	36 THE SOCIAL PROGRAMME
25 PROFESSIONAL INTERNSHIPS	37-38 SGI WORLDWIDE



HELLO AND WELCOME

Approaching 50 years of teaching English to students from all over the world.



I hope our various accreditations and validations reassure you that at SGI you always receive the very highest level of tuition and training with our fully qualified and experienced academic management team.

Much has changed at SGI since we began teaching English in a small building in the Marylebone district of Central London in 1962. Over this time we have developed into an internationally recognised language training organisation, which continues to provide a wide and innovative range of English language courses for everybody. With a rapidly growing number of UK and overseas partners the national and international dimension of SGI has never been more prominent.

To add to the momentum, we have recently moved within Central London to a fabulous new purpose-built training centre in the fashionable Fitzrovia district, just to the north of Oxford Street, where we are able to offer comfortable quiet attractive classrooms, free wireless and internet facilities and a computer based study centre.

This year we are also proud to present in response to public demand, a whole host of new courses. These include a range of Evening courses for people living and working in London. Home Tuition, where you live and study in the home of the teacher. Online courses, for those students unable to come to London and former students wishing to continue their English study when they return home. In-company courses, designed to improve the English business communication skills – of employees working in all types of organisations here in the UK and Overseas... and Work Experience, a great way to improve your English by working from one to six months in a British company.

As well as our English programmes we can help you with your accommodation whilst in London. From homestays (host families) to student residences we will ensure that you feel as comfortable as possible during your stay.

At the forefront of fashion, music, culture and the arts, London continues to be one of the most exciting, vibrant and colourful cities in the world. Through our Social Programme the staff at St George International will ensure that you enjoy everything this great city has to offer. Also the new SGI Community keeps students up to date with the latest SGI social events and news as well as enabling students to keep in touch with each other after they leave the school.

It is always a pleasure to see such an international group of people improving their English and having a great time in this fascinating city. Please look through the brochure at what we have and please don't hesitate to contact us if you have any questions. We all look forward to welcoming you.

Max Loach MBA, MA (App.Ling), Dip TESOL
School Director

The ability to communicate effectively in English is a key factor for us at St George International and the language levels chart below helps in many different ways:

- It provides objective descriptions of what tasks can be performed at different levels of ability
- It helps us place you in a class at the right level when you arrive on your first day
- It helps you assess what you can do in the language at a particular level as opposed to what you know
- It indicates what examinations are available at what level
- It helps you define language objectives that you can aim for

Please note that some of our study programmes demand minimum levels of competence in English – the key below indicates which courses may be taken at which levels. It is important that we determine your level of English before you enrol.

Our reputation for excellence in teaching English successfully to students from all over the world is built upon a number of key factors:

THE KNOWLEDGE AND EXPERIENCE GAINED FROM NEARLY 50 YEARS OF TEACHING ENGLISH

- Constantly improving the courses we provide
- Clear objectives to the courses you undertake
- Providing a relaxed atmosphere ensuring full student participation
- A creative and varied teaching approach to meet the needs of ALL students

OUR TEACHING TEAM

The staff at St George International are a unique blend of different personalities and cultural backgrounds. All our teachers are qualified to teach English as a foreign language. Many of our teachers also have an advanced Diploma qualification. Nearly all of them have first degrees and some have masters degrees in a range of subjects.

YOUR COURSE INCLUDES

- Your lessons
- First Course book
- Free E-learning programme
- Lifelong SGI Community membership
- Placement test and interview
- Welcome pack, folder and party
- Free Internet & WiFi access
- Certificate of Progress
- Study Centre access
- Some social programme activities

	A1	A2	B1	B2	C1	C2			
BEGINNER	ELEMENTARY YOU CAN DEAL WITH VERY LIMITED DAY-TO-DAY ACTIVITIES You can understand and use very basic phrases and interact in a simple way provided the other person talks slowly and is prepared to help.	LOWER INTERMEDIATE YOU CAN DEAL WITH PREDICTABLE DAY-TO-DAY ACTIVITIES Basic communication is possible with plenty of assistance. You don't have enough language to cope with everyday problems alone, but you can manage the simple interactions of daily life, both commercial and social.	INTERMEDIATE YOU CAN DEAL WITH VARIED FAMILIAR EVERYDAY ACTIVITIES You can make effective and independent use of the language in familiar situations. There are still many mistakes and gaps, but you can communicate and understand general messages in most contexts. Lines of communication are in place and working efficiently.	UPPER INTERMEDIATE YOU CAN DEAL WITH SIMPLE KEY WORK TASKS You manage easily enough in quite complex and demanding situations. There are lapses in accuracy in complex situations but communication is easily restored.	ADVANCED YOU CAN DEAL WITH COMPLEX WORK TASKS You now have an excellent command of the language, consistently fluent, accurate and well organised. You cope well with demanding and complex situations.	PROFICIENCY YOU CAN USE THE LANGUAGE FLUENTLY, ACCURATELY AND APPROPRIATELY You have now attained an exceptional level of fluency commensurate with that of a native speaker.			
	BASIC USER	INDEPENDENT USER		PROFICIENT USER					
IELTS Equivalent Exam Score		4.5	5.0	5.5	6.0	6.5	7.0	7.5	8.0
TOEFL Equivalent Exam Score (Paper Based)				500	550	600	650		
TOEFL Equivalent Exam Score (Computer Based)				173	213	250	280		
Cambridge Equivalent Exam Score	KET		PET		FCE	CAE	CPE		

LEVELS A1 – C2 CORRESPOND TO THE COUNCIL OF EUROPE'S COMMON EUROPEAN FRAMEWORK



I love London for its
diversity. Traditional
and modern blending
together; the people,
the cultures and the
architecture. Mariko, Japan

These General English programmes are designed for students who wish to improve their ability to communicate in English whilst experiencing the vibrancy and excitement of London.

The SGI method enables students to develop their ability to communicate effectively in English by improving grammatical knowledge, language skills and confidence. At SGI we will help you combine effective language studies with a wide range of social and cultural activities.

KEY FEATURES

- Start any Monday
- Individual guidance and monitoring of your progress by your teachers
- Enjoyable and effective learning activities
- Maximum 10 students per class (14 in July/August)
- All levels from Elementary to Advanced
- Minimum 1 week
- Minimum age 16
- 1 lesson = 45 minutes



GROUP

STANDARD COURSE

This general English course gives students the opportunity to improve their all-round ability in English by focusing on grammar and vocabulary development, speaking, listening, and writing skills. Our key aim is to increase students' confidence in the day-to-day use of the language.

To ensure students receive stimulating and enjoyable lessons, we use a host of supplementary materials in addition to the course book. With the use of DVD and audio materials, the internet and authentic texts we aim to maximise language skill development and effective communication.

09:15 – 10:45

11:15 – 12:45

Lunch

13:30 – 15:00

15:15 – 16:45

- MAXIMUM 10 STUDENTS PER CLASS (MAX 14 JULY/AUGUST)
- 20 LESSONS PER WEEK (15 HOURS)
- MORNING TUITION
- GROUP TUITION



GROUP

INTENSIVE COURSE MINI-GROUP

This programme combines the morning 'Standard' programme with an afternoon mini-group. The mini-group allows the tutor to focus on the immediate needs of the students whilst improving listening and speaking skills, expanding vocabulary and developing confidence. Activities range from discussions of issues and topics such as travel, film, culture and politics to project work and task-based learning. Work may be integrated with cultural visits outside the classroom. The emphasis is on group work and effective oral communication.

09:15 – 10:45

11:15 – 12:45

Lunch

13:30 – 15:00

15:30 – 17:00

- 30 LESSONS PER WEEK (22.5 HOURS)
- MORNING & AFTERNOON TUITION
- GROUP TUITION
- MAX 10 STUDENTS PER CLASS MORNING (MAX 14 JULY/AUGUST)
- MINI-GROUP – MAX 6 STUDENTS PER CLASS AFTERNOON (MAX 8 JULY/AUGUST)



GROUP

ONE TO ONE

COMBINATION COURSE

Our Combination courses integrate the Standard course with a tailor-made one-to-one programme to meet the specific needs and requirements of the student. Special attention is paid to maximising the individual's ability to communicate fully.

09:15 – 10:45

11:15 – 12:45

Lunch

13:30 – 14:15

14:30 – 15:15

15:30 – 16:15

- 20 LESSONS PER WEEK (15 HOURS)
- PLUS 5, 10, OR 15 ONE-TO-ONE LESSONS
- MORNING & AFTERNOON TUITION

This course for business men and women is designed to be enjoyable, stimulating and, most importantly, practical.

SGI has a great range of business english group courses that introduce key business concepts and subjects as well as develop practical skills for the modern business world. Students may finish their course with an internationally-recognised business english test. Each study week is based around a central theme or functional area and is worked on as a project by students with their trainer.



KEY FEATURES

- Start any Monday
- Maximum 6 students per class (8 in July and August)
- Optional afternoon General English or One-to-One lessons
- Individual guidance and monitoring of your progress by your teacher
- Take the BULATS test at the end of your course
- Enjoyable and effective learning activities
- Minimum level: Intermediate
- End of course report on request

THEMES

- Presentations skills
- Telephone technique
- Meetings
- Negotiations
- Correspondence
- Marketing and advertising
- Financial English
- World trade and globalisation

BULATS

(Business Language Testing Service)

BULATS is an online Business English language test you can take any time with an authorised school like SGI. A University of Cambridge test report is issued immediately after the test giving the student both a precise level and performance breakdown.



MINI GROUP

BUSINESS ENGLISH

Running from 9.15 – 12.45, this Business English course introduces key business concepts and topics and develops practical skills within real business scenarios, including presentations, negotiations, telephoning, meetings and discussions. Based on an interactive approach, students participate in problem-solving tasks, case studies and business simulations. Students are also encouraged to take the BULATS test at the end of their course.

09:15 – 10:45

11:15 – 12:45

Lunch

13:30 – 15:00

15:15 – 16:45

- MAXIMUM 6 STUDENTS PER CLASS (8 IN JULY/AUGUST)
- 20 LESSONS PER WEEK (15 HOURS)
- MORNING TUITION
- MINI-GROUP TUITION



MINI GROUP

BUSINESS ENGLISH PLUS

A combination of the Business English morning class with a General English mini-group aiming to develop effective oral communication in social English. The focus in the afternoon is on discussion of topics such as travel, film, culture, sport and politics and task based learning with a strong emphasis on groupwork. This course is particularly appealing for students who would like to improve their ability to communicate clearly and effectively in both their working environment and socially.

09:15 – 10:45

11:15 – 12:45

Lunch

13:30 – 15:00

15:30 – 16:45

- MAXIMUM 6 STUDENTS PER CLASS MORNINGS (8 IN JULY/AUGUST)
- MAXIMUM 6 STUDENTS PER CLASS AFTERNOONS (8 IN JULY/AUGUST)
- 30 LESSONS PER WEEK (22.5 HOURS)
- GROUP TUITION



MINI GROUP

ONE TO ONE

BUSINESS ENGLISH COMBINATION

The Business English Course followed by 5, 10 or 15 lessons per week of individual tuition. The individual tuition is tailored to the client's needs and can focus on topics particular to the client's profession.

09:15 – 10:45

11:15 – 12:45

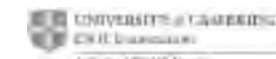
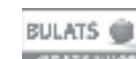
Lunch

13:30 – 14:15

14:30 – 15:15

15:30 – 16:15

- MAXIMUM 6 STUDENTS PER CLASS (8 IN JULY/AUGUST)
- 20 LESSONS PER WEEK (15 HOURS)
- PLUS 5, 10, OR 15 ONE-TO-ONE LESSONS
- MORNING & AFTERNOON TUITION





These courses for professional people are designed to be effective, stimulating and, most importantly, practical.



KEY FEATURES

- Start any day of the week
- Our Executive English programmes incorporate the specialised vocabulary as well as functional use of the English Language which the clients are likely to face in the course of their professional life
- English for specific purposes, eg. Banking, Law, Medicine, Marketing
- 2-1, weekend and evening courses are available. Please ask for a quotation
- Working lunch with your tutor
- Improve your social English skills
- 1 lesson = 45 minutes

At St George International we offer a great range of intensive and semi-intensive one-to-one programmes that are structured to meet the client's specific needs and requirements. These courses are ideal for determined professionals who need to maximise progress during a short stay in London. Away from the distraction of a busy office or home life, our one-to-one programmes give participants the opportunity to immerse themselves totally in the language, practising speaking and listening over long periods and improving substantially their communication skills.

Before a course begins a detailed diagnosis of language competence is carried out, followed by an assessment by one of our Academic Managers. This helps determine general aptitude, language learning needs and a precise level of English. A course programme is then agreed with the client, taking into consideration the specific needs associated with the client's own line of work. Clients are encouraged to bring their own materials, such as a presentation they are due to make.

ONE TO ONE

CRASH COURSE

The crash course runs throughout the day from Monday to Friday and so gives the student ample opportunity to work on all aspects of the language they need for their professional life.

- 40 LESSONS PER WEEK (30 HOURS)
- ONE-TO-ONE TUITION
- MORNING AND AFTERNOON TUITION
- TAILOR-MADE PROGRAMME

09:15 – 10:45

11:15 – 12:45

Lunch

13:30 – 15:00

15:15 – 16:45



FLEXIBLE PROGRAMME

A flexible programme of one-to-one tuition allows students to choose the time, place and intensity of the teaching schedule to fit in with other business commitments.

ONE TO ONE TUTOR

EXECUTIVE PROGRAMME

This programme is the crash course plus a working daily lunch with a tutor. This develops the participant's level of social English in a relaxed surrounding and helps to consolidate classroom input.

- 50 LESSONS PER WEEK (37.5 HOURS)
- ONE-TO-ONE TUITION
- INCLUDES LUNCH WITH TUTOR
- MORNING AND AFTERNOON TUITION
- TAILOR-MADE PROGRAMME

09:15 – 10:45

11:15 – 12:45

Lunch with tutor

14:15 – 15:45

16:00 – 17:30



ONE TO ONE

- ONE-TO-ONE TUITION
- MORNING OR AFTERNOON TUITION
- TAILOR-MADE PROGRAMME

ONE TO ONE

SEMI-INTENSIVE PROGRAMME

This programme can be taken either in the morning or afternoon allowing the student time to integrate the programme with work commitments, self-study or a more relaxing time during their stay in London.

- 20 LESSONS PER WEEK (15 HOURS)
- ONE-TO-ONE TUITION
- MORNING OR AFTERNOON TUITION
- TAILOR-MADE PROGRAMME

09:15 – 10:45

11:15 – 12:45

Lunch

13:30 – 15:00

15:15 – 16:45



IELTS PREPARATION COURSE

Helping you access the world of higher education and international work opportunities.

The International English Language Testing System (IELTS) is an internationally owned and globally recognised direct English language assessment of the highest quality and integrity readily available throughout the world.

IELTS is a highly dependable, practical and valid English language assessment primarily used by those seeking international education, professional recognition, benchmarking to international standards and global mobility.

St George International's IELTS Preparation course runs throughout the year for those with an Intermediate level or higher, and can be started on any Monday.

IELTS COURSES

IELTS PREPARATION:

20 LESSONS PER WEEK (15 HOURS)

The course is ideal for students who wish to enter a British University, as it is the key test used in the UK to assess applicants' English language ability. It is also a very popular course with students who need a proven level of English for work and career purposes.

As well as English language development and preparation vital for the IELTS, the course also focuses on academic skills and learning strategies that will help students at a British University, for example, how to research projects in a library, and giving your opinion in a seminar.

KEY FEATURES

- Start any Monday
- Small groups (Maximum 10 students) (12 in July and August)
- 1 lesson = 45 minutes
- Advice on British University entrance
- IELTS exam arranged for you
- Individual guidance and monitoring of your progress by your teacher
- Enjoyable and effective learning activities
- Minimum level: Intermediate

IELTS PLUS:

30 LESSONS PER WEEK (22.5 HOURS)

A combination of the IELTS Exam morning class with the afternoon General English class (10 lessons per week) which aims to develop the student's understanding of British culture and confidence when using social English. Activities range from discussions of issues and topics such as travel, film, culture and politics through to project work based around internet research. Study may be integrated with cultural visits outside the classroom. The emphasis is on group work and effective oral communication.

IELTS COMBINATION COURSE:

Morning group tuition and afternoon 1-1 tuition. This course combines the IELTS Exam morning class with a tailor made one-to-one afternoon programme to meet the specific needs and requirements of the student. You can study either 5 (Combo 5), 10 (Combo 10) or 15 (Combo 15) lessons of one-to-one each week in the afternoon.

SUCCESSFUL STUDENTS AT BRITISH UNIVERSITIES

With our strong university and higher education links we have a growing number of successful former students who have prepared for their IELTS with St George International and successfully gone on to study an undergraduate or post-graduate degree programme in the UK.

THESE NOTABLY INCLUDE:

- Oxford University
- Roehampton University London
- Kingston University
- City University
- The London Metropolitan University
- Reading University
- The University of Westminster
- The University of Nottingham Trent
- Saint Martins College of Art & Design
- Middlesex University



St George International offers a comprehensive and stimulating University Foundation Course for overseas students.

KEY FEATURES

- September (36 week) and January (24 week) entry points
- Maximum 10 students in the morning (12 in the afternoon)
- 30 lessons per week (1 lesson = 45 minutes)
- University places offered with SGI's British University partners
- Full University Advice and Assistance service
- Enjoyable and effective learning strategies
- IELTS exam arranged for you



THE PATH TO DEGREE COURSES AT BRITISH UNIVERSITIES

St George International offers a comprehensive and stimulating University Foundation Course for overseas students leading to study of primarily business-related degrees at British Universities.

This 6 or 9 month academic course, with a maximum of 12 students in a class, gives students a foundation not only in English language and culture but also in the world of Business from a European perspective.

The intensive course also offers excellent preparation and provides invaluable experience reflecting the demands of British Universities. We also arrange visits to Universities as well as having regular advice sessions to help you with your University choice.

KEY OBJECTIVES FOR STUDENTS...

- To gain access to a British University
- To learn in a friendly small group environment with maximum personal attention
- To achieve an IELTS exam score sufficient for University access
- To increase students' subject knowledge in Business, Economics and Politics
- To improve students' academic study skills sufficient to succeed at University
- To familiarise students with British Universities and life in Britain

ADVICE SERVICE

SGI's academic team is very experienced at helping students find the course and university that is right for them. Throughout the course we provide regular individual counselling sessions, advising on the courses and Universities most suitable for the student, and assisting in the completion and processing of University applications.

DEVELOPING THE SKILLS YOU NEED

The Foundation Course at St George International has a strong emphasis on developing the skills students need to successfully complete their British University studies. British Universities place a great deal of emphasis on self-study and written assignment. We are aware that these areas of University study may be unfamiliar to overseas students and so ensure that they are addressed during the Foundation Course.

SUCCESSFUL STUDENTS AT BRITISH UNIVERSITIES

With our strong university and higher education links we have a growing number of successful former students who have completed our University Foundation course and successfully gone on to study an undergraduate or postgraduate degree programme in the UK.

THESE NOTABLY INCLUDE:

- Oxford University
- Roehampton University London
- Kingston University
- City University
- The London Metropolitan University
- Reading University
- The University of Westminster
- The University of Nottingham Trent
- Saint Martins College of Art & Design
- Middlesex University



Intensive courses, refresher
courses, study holidays, doing
something new, advancing your
career, making new friends,
nights out, exploring the city.
There's something for everyone.



Meeting the demands of London's increasingly professional international workforce, SGI has now developed and made available a number of English language evening courses.



BUSINESS ENGLISH EVENING MINI-GROUP:

4 WEEK COURSE:
2 EVENINGS PER WEEK:
TUESDAY AND THURSDAY 6.30 – 8.30:
COURSES RUN EVERY MONTH:
MAXIMUM 6 PARTICIPANTS

This course is primarily aimed at people who wish to improve and become more confident in their use of Business English. It is a practical course that aims to improve students' business communication skills. Based on an interactive approach, students participate in problem-solving tasks, case studies and business simulations.



THESE COURSES ARE PRIMARILY AIMED AT PEOPLE CURRENTLY LIVING AND WORKING IN LONDON WHO IN SOME WAY WANT TO IMPROVE AND BECOME MORE CONFIDENT IN THEIR USE OF ENGLISH. WITH A TYPICAL MAXIMUM OF EITHER 6 OR 8 PARTICIPANTS ON A COURSE, STUDENTS ARE GUARANTEED A VERY HIGH LEVEL OF PERSONAL ATTENTION AND PARTICIPATION. WE CURRENTLY HAVE 4 EVENING COURSES AVAILABLE.

IELTS EVENING MINI-GROUP:

4 WEEK COURSE:
2 EVENINGS PER WEEK:
MONDAY AND WEDNESDAY
6.30 – 8.30:
COURSES RUN EVERY MONTH:
MAXIMUM 8 PARTICIPANTS

This course is primarily aimed at people who wish to enter a British University or Higher Education institution for either undergraduate or postgraduate degree courses. It is also a very popular course with students who need a proven level of English for work and career purposes both here in the UK and Overseas.

CAMBRIDGE FCE EXAMINATION PREPARATION:

10 WEEK COURSE:
2 EVENINGS PER WEEK:
TUESDAY AND THURSDAY 6.30 – 8.30:
COURSES RUN THREE TIMES A YEAR:
JANUARY, APRIL AND OCTOBER:
MAXIMUM 10 PARTICIPANTS

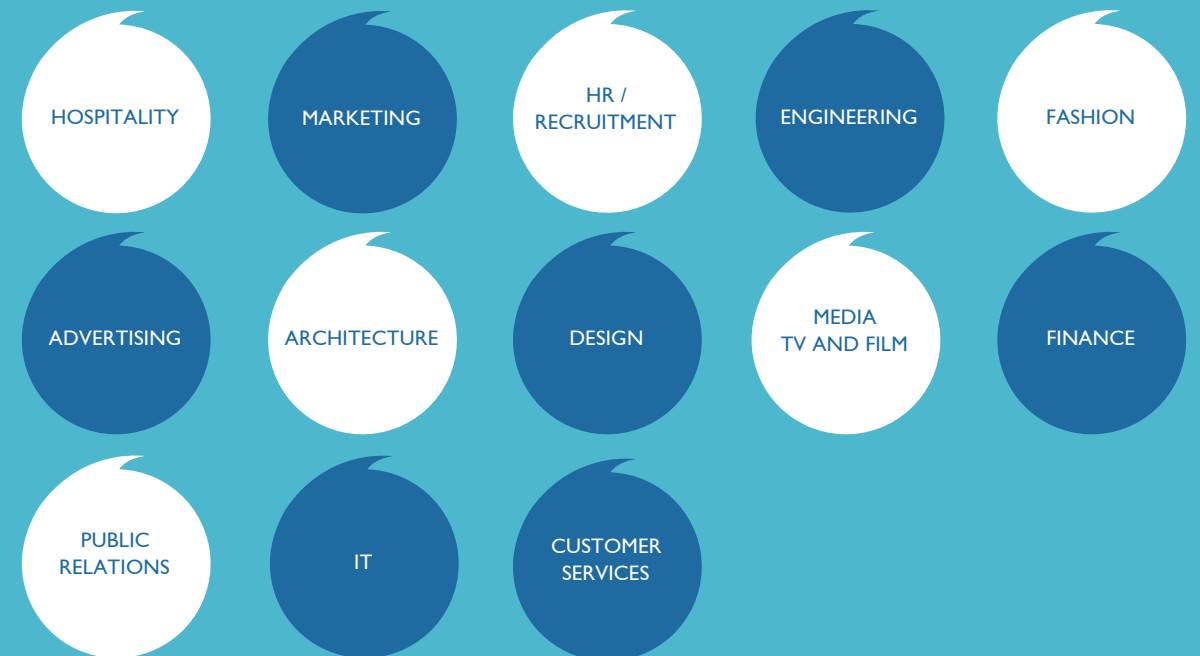
The Cambridge First Certificate in English (FCE) Evening Mini-Group course is primarily aimed at people who wish to improve their General English and sit an internationally recognised English language examination. Successful completion of this exam indicates students have sufficient proficiency in English to be of practical use in jobs where English is required.

ENGLISH PRONUNCIATION EVENING MINI-GROUP:

6 WEEK COURSE:
1 EVENING PER WEEK: TUESDAY
6.30 – 8.30: COURSES RUN
THROUGHOUT THE YEAR:
MAXIMUM 6 PARTICIPANTS

This course is primarily aimed at people who wish to improve and become more confident in their use of Standard English pronunciation both socially and at work. It is a practical course aiming to work on key aspects of Spoken English such as linking words, sentence intonation and features of connected speech.

Professional internships can be arranged in many business sectors. For many students, gaining work experience in London is an excellent way of improving English language skills in a working environment.



At St George International we offer professional work experience in companies located in London. Professional internships provide unpaid professional work experience in an English speaking environment in the area of the candidates' studies, previous experience and / or career aspirations. Placements are available to EU citizens only and add considerable status to a CV and are excellent for students' long-term career prospects.

Work experience placements are available in a wide range of business sectors - marketing, finance and IT are amongst the most popular placements, but most other business areas can be catered for. An internship can be taken in combination with an English language course at our school in Central London, or, for students with excellent English language skills, on its own. Your internship will be monitored and assessed and you may apply for an internationally recognized certificate confirming your period of work experience.

If you are looking for a different way of learning English, why not consider a Home Tuition course – where your classroom is your teacher's home.

Most people would agree that the most effective way of learning a language is through one-to-one tuition, where the study programme is individually designed based on your own needs, interests and weaknesses. How better to maximize your learning through total immersion, and learn about life in Britain at the same time than by combining your lessons with living in your teacher's home – no more time wasted by travelling to school every morning – and absolutely no chance of mixing with other speakers of your language.

Our Home Tuition partner has been delivering top quality tailor-made one-to-one language training courses since 1994 and, like SGI London, is accredited by the British Council. Together we have designed courses which can either be taken as an alternative to or in combination with traditional school based English language learning.

Home tuition is perfect for general, examination preparation or business purposes – and for students who are limited in time but who are very motivated to learn English rapidly in an intensive environment. Courses are available for adult students and for Young Learners from the age of 11.

COURSES

Home tuition courses are available in General English, Examination Preparation, Business English and special programmes for Young Learners. Most courses are one-to-one, but if you wish to study with a friend or colleague whose language level and learning objectives are the same as yours, then we will be able to arrange a two-to-one programme for you.

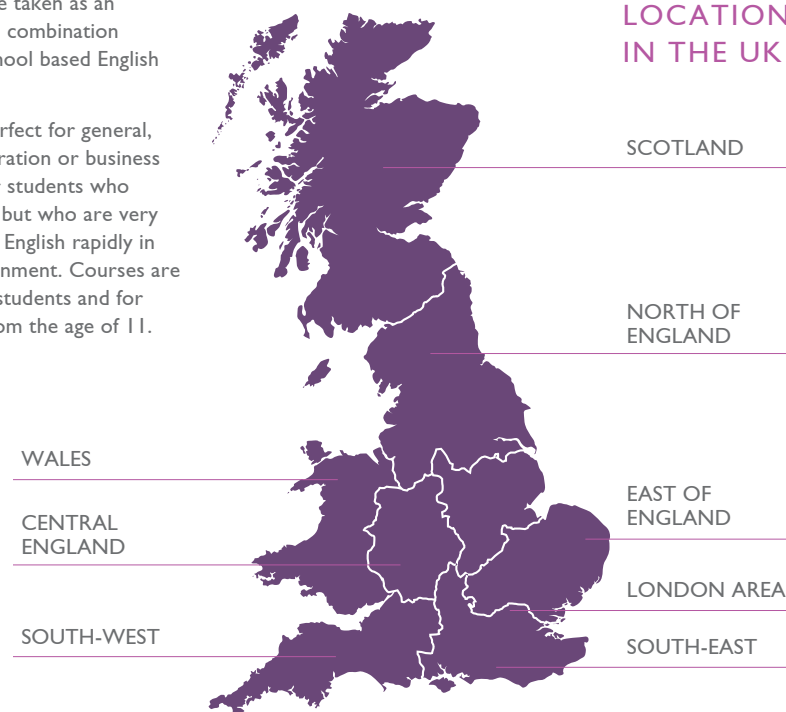
With the St George International language school located in Central London, we are also able to arrange a Home Tuition / London Group Course Combination. All courses are available throughout the year and usually start every Monday.

LOCATIONS

When you apply for a Home Tuition Course, we will ask you to give us your top three preferences and we will then allocate you to a tutor who is well matched to your requirements and lives in one of your preferred areas.

It is extremely important to remember that finding the right tutor and programme is more important than the location – and on occasions you will not get your first choice of location.

LOCATIONS IN THE UK



IN-COMPANY COURSES

SGI has nearly 50 years experience of providing In-Company English language courses across a broad range of industry sectors here in London, the UK and overseas. These group courses are especially designed to meet the needs and requirements of companies who both operate globally and have an increasingly international workforce. Their key objective is to develop and improve the English business communication skills of the human resource.

BUSINESS COMMUNICATION SKILLS COURSES

Below are some of our more popular training courses. Each of the training courses can stand alone as one or two day courses (one day = 6 hours of training), or can be combined.

MEETINGS & NEGOTIATIONS

The 6 hour course enables participants to perform more effectively in English-language meetings and negotiations. We focus on the language, vocabulary and expressions that ensure participants get their point across clearly and convince their counterparts. The materials will be presented through a range of visual and audio media.

A 12-hour (2 day) course is also available, going into greater depth on each of the above issues and allowing further practice and time for the analysis of the attendees' own recorded performances.

PRESENTATIONS

The 6-hour course focuses on appropriate vocabulary and phrases for persuasive and clear formal and informal presentations in English as well as looking at techniques to increase the impact of your presentation. A 12-hour course is also available, going into greater depth on each of the above issues and allowing further practice and time for the analysis of participants' own recorded presentations.

TELEPHONING

This 6-hour intensive course on telephone skills is for non-native speakers who need to be able to use the telephone at work effectively in English. The focus will be on preferable vocabulary and phrases as well as on intonation and emphasis to help you sound clearer and more confident on the phone.

EFFECTIVE REPORT WRITING

The 6-hour course is aimed at employees who need to write formal professional documents in English. The course focuses on: the structure of a report, grammatical and lexical techniques to increase the formality of your writing, conventional phrases and expressions used in reports and improving the participants' skill in report writing through drafting, redrafting and correcting reports.

KEY FEATURES OF ALL COURSES

- Group Tuition - up to maximum 8 participants
- One day of training = 6 hours
- Alternative formats available - e.g: 3 blocks of 2 hours; 3 blocks of 4 hours etc
- Flexibility – We are flexible and responsive to the greatly varying needs of our clients.
- Tailored focus - Paramount consideration is also given to the specific needs associated with the client's own line of work.
- Personal Attention – The courses are best suited to groups up to a maximum of 8 participants thus ensuring a high level of personal attention.
- Preparation – Before a course begins a detailed assessment of the participants' English language competence is carried out by one of our Academic Managers. This helps determine language learning needs and a precise level of English.
- Feedback – Another important feature is our system of reporting which ensures the client is kept informed of progress being made by the participants as well as a detailed final report at the conclusion of the training.

CONTACT US

If you would like to discuss your company's requirements in greater detail, please call +44 (0)20 7299 1700 and ask for an In-Company course advisor or email info@stgeorges.co.uk

REFRESHER COURSE FOR OVERSEAS TEACHERS OF ENGLISH

SGI has considerable experience of providing English language teacher training courses for both native and non-native speakers of English.

OUR WELL ESTABLISHED REFRESHER COURSE HAS BEEN DESIGNED BASED ON THE SCHOOL'S EXPERIENCE OF TEACHER TRAINING. EU FUNDING IS AVAILABLE FOR THIS COURSE. PLEASE CONTACT US FOR FURTHER DETAILS.



GROUP TUITION

THE COURSE

The two week Refresher Course is suitable for primary and secondary school English teachers, from both the private and state sectors. It provides a balance of Language Development at Advanced level and training in Teaching Skills and Methodology. The teacher training component aims to raise an awareness of techniques and skills in the classroom in line with the Communicative Approach methodology and current EFL thinking, as well as giving an overview of other Methodologies.

The Refresher Course serves a dual purpose: increasing teachers' confidence as Teachers of English, providing practical ideas for the classroom and on a broader level developing their awareness as teachers to reflect on and investigate their own teaching practices.

MINIMUM LANGUAGE LEVEL

REQUIRED: Upper Intermediate (If you are unsure about your language level please contact us and we will send you our grammar test or you can complete it online)

- MAXIMUM 12 STUDENTS PER CLASS
- 30 LESSONS PER WEEK (22.5 HOURS)
- 1 LESSON = 45 MINUTES
- MORNING + AFTERNOON TUITION
- GROUP TUITION

09:15 – 10:45

11:15 – 12:45

Lunch

13:30 – 15:00

15:15 – 17:00

TEACHER TRAINING PROGRAMMES

ST GEORGE INTERNATIONAL ENJOYS A WORLD-WIDE REPUTATION FOR HIGH QUALITY TEFL TEACHER TRAINING COURSES. BESIDES THE REFRESHER COURSE WE ALSO RUN THREE TRINITY COLLEGE LONDON VALIDATED PROGRAMMES.

THE CERTIFICATE

The Trinity College London Certificate in TESOL is an initial qualification for people who have little or no TEFL teaching experience and require formal training.

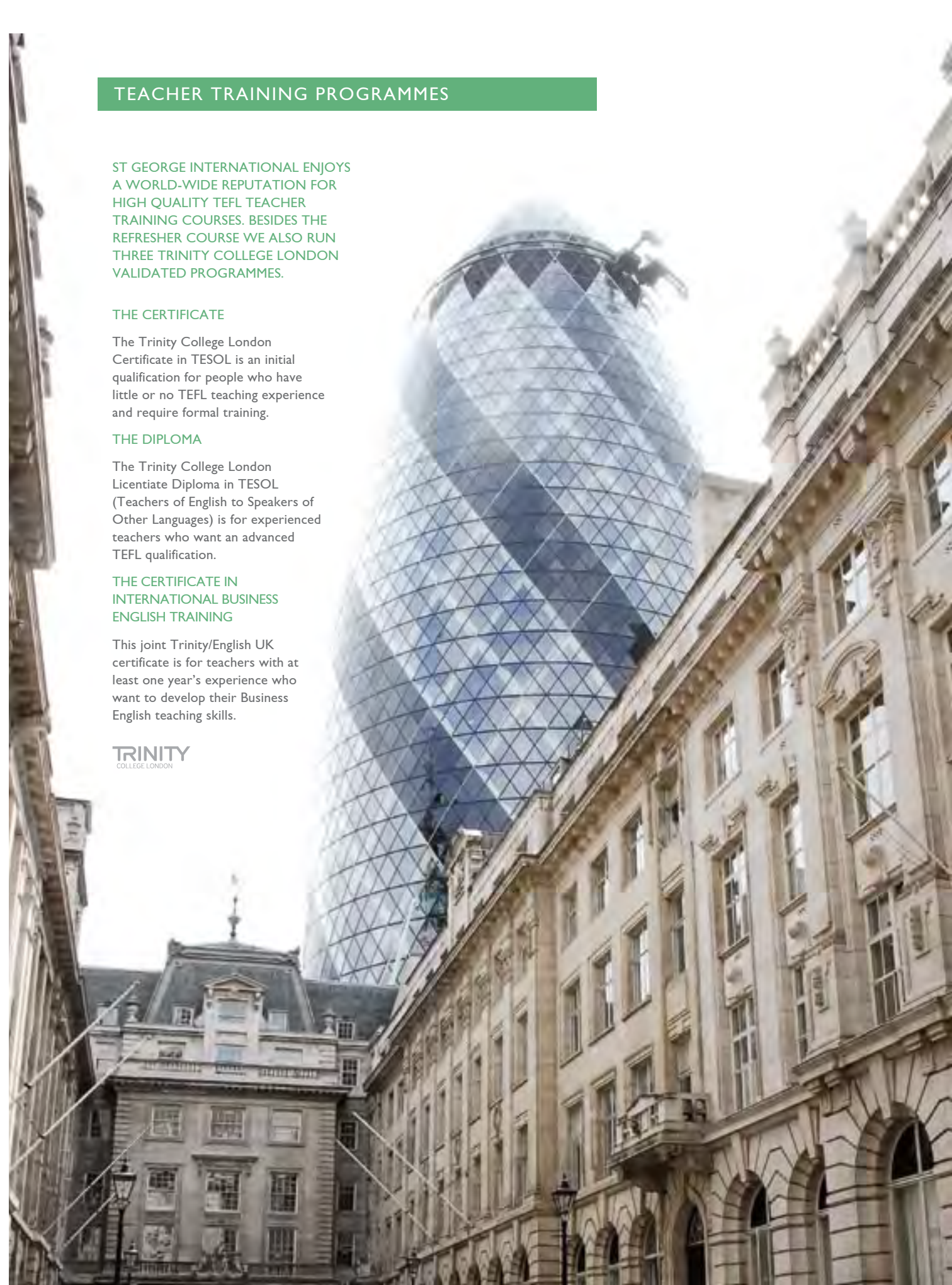
THE DIPLOMA

The Trinity College London Licentiate Diploma in TESOL (Teachers of English to Speakers of Other Languages) is for experienced teachers who want an advanced TEFL qualification.

THE CERTIFICATE IN INTERNATIONAL BUSINESS ENGLISH TRAINING

This joint Trinity/English UK certificate is for teachers with at least one year's experience who want to develop their Business English teaching skills.

TRINITY
COLLEGE LONDON



St George International was established in 1962 and is one of the leading providers of foreign language courses in the UK.

With a nationwide pool of teachers in addition to our modern language school in Central London, we are able to provide lessons in most modern languages wherever you are in the UK – and with our partner language schools abroad, in a host of exciting locations throughout Europe. Whether you need to learn a language for professional or academic reasons, or simply as a hobby, your nearest SGI tutor is just a phone call away.

SGI BUSINESS LANGUAGE COURSES

St George International's worldwide reputation as a language trainer is founded on our long history of providing language courses for business purposes. We work with only the very best of trainers, who are all native-speakers and qualified to a high level. Our courses can be studied in a wide range of languages and locations.

SGI ACADEMIC LANGUAGE COURSES

SGI language tutors are experienced in providing support in any language for students who require additional private tuition to meet their academic objectives - for example, intensive preparation for school or college foreign language examinations (language or literature), after-school lessons to "keep up" or practice in individual skills, such as dictations, translations, essay writing, pronunciation or any other area of perceived weakness.

SGI GENERAL LANGUAGE COURSES

At SGI, we have students learning languages for all kinds of reasons, for example business language courses or academic language courses, but there are many other reasons why you might want to pick up a new language or brush up an existing one. For example, you may be preparing for a holiday or relocation, or considering buying a property abroad - although many of our clients are simply learning a language for fun and to meet new people from other cultures.

CORPORATE LANGUAGE PROGRAMMES

Many employers have turned to St George International to prepare and manage Corporate Language Programmes on their premises. A Corporate Language Programme can be designed in any language and at any level. Often, a company wishes to concentrate on language learning for business purposes at a higher level, but we are equally happy to arrange General language lessons for beginners and elementary learners.

SGI LANGUAGE SCHOOLS ABROAD

New to SGI – learn Spanish in Spain, French in France, German in Germany and Italian in Italy! What better way to improve your skills in a foreign language than by spending some time in the country where it is spoken – learning in the classroom and putting your new skills into practice after your language lessons while immersing yourself in the local culture!

Here at SGI, we have a range of partner language schools located across Europe who share our passion for quality language learning, many of whom are fellow members of EAQUALS (The European Association for Quality Language Services).

OUR PARTNER SCHOOLS ARE LOCATED IN:

- FRANCE
Montpellier, Nice, Paris, Vichy
- SPAIN
Barcelona, Madrid, Malaga, Salamanca
- GERMANY
Berlin, Frankfurt, Munich
- ITALY
Florence, Milan, Rome

All students who study a course at SGI are given free access to the SGI E-learning programme and lifetime membership of the SGI Community.

ONLINE GENERAL ENGLISH COURSE

SGI also offers a fun and effective low-cost 30 hour Online General English Course that gives you the opportunity to improve your General English as well as have a very high level of tutor guidance and feedback. Once your course is completed you will receive the St George International completion certificate, which clearly states your finishing level along with a description of what you are able to do at that level.

SGI E-LEARNING

As a student you can use the E-learning programme before, during and for 4 weeks after your course has finished. The materials used are colourful, varied, interesting and interactive and the programme makes full use of external websites to make your learning stimulating. It is an excellent way of preparing for your trip to London, doing extra practice while you are here and then continuing to work on your English when you leave the school.

SGI COMMUNITY

As an SGI student you also have lifetime membership of the SGI Community. During your course, the community pages are a great way of keeping in touch with what's going on at the school. You can find information on the weekly social programme and weekend excursions - you can see the latest photos from social events too! There is also an SGI Information section with great ideas about things to do and visit in London, including teachers' recommendations. After your course you can send messages and photos through the SGI Community and so keep in touch with friends and teachers you met here in London.



Both Oxford and Cambridge are world-famous as centres of academic excellence. With their prestigious universities and beautiful college buildings, it is easy to see why so many people have been inspired by these quintessentially English towns.

SGI CAMBRIDGE

The SGI Partner School in Cambridge was founded in 1962, like SGI London, and is accredited by The British Council. It is open all year and provides quality English courses for adults (aged 16+) from all over the world. The staff pride themselves on creating a caring, friendly atmosphere in the School. Students receive a warm welcome and quickly get to know their fellow students and the staff.

The School is centrally located in Cambridge, just 15 minutes walk from the city centre and its famous university colleges. Students can choose from an exciting range of General English, Business English and Exam English courses and can be accommodated in either homestays or student residences.

SGI OXFORD

The SGI Partner School in Oxford was founded in 1983 and is accredited by The British Council. It is open all year and provides quality English courses for adults (aged 18+) from all over the world. It is a small, very personal, family-run school situated in Wheatley, an attractive village just outside Oxford.

The School has a great range of English courses for those who wish to increase the effectiveness of their English for work, travel or university entrance. Students can be accommodated in host-families all of whom are just a walk away from the school. One interesting feature of the Oxford School is that their facilities are available all day including weekends.



Summer holiday courses for children and teenagers are available at our partner schools in Central London and by the sea.

SGI TEENAGER LONDON (11-15)

The School is in a wonderful Central London location right by the famous Regent's Park and London Zoo and near to the popular district of Camden Town. These summer holiday courses for 11-15 year old students combine English classes in the morning followed by an afternoon programme of excursions, sports and art. Children and staff from 30 countries form a dynamic learning community. Maximum class size is 16 students.

SGI CHILDREN LONDON (8-11)

The course at Regent's Park is available in June, July and August for students who want a holiday course in London. Students have a choice of tuition and activities only or a full package including accommodation. All levels are accepted. The main focus of this Monday to Friday programme is for students to improve their English through fun activities.

SGI TEENAGER BAWDSEY BY THE SEA (11-15)

The School is located in a beautiful manor house with spacious grounds that run down to the sea. These English Plus summer holiday courses for 11-15 year old students, combine 15 hours of English classes as well as 6-9 hours of a chosen activity option. Activity options include Football, Sailing, Horse Riding, Tennis, Art, Golf and Music/Drama. There are also two full day excursions each week. Children and staff from 30 countries form a dynamic learning community. Maximum class size is 18 students.



It's important your stay in London is a comfortable one. SGI has a great range of accommodation options whatever your requirements.

SGI recognises that when you are away from home it is important that you feel comfortable wherever you live. That's why we offer a comprehensive range of different student accommodation options, each with their own individual benefits. If you're looking to become a student at St George International then look no further for student accommodation, whatever your requirements, one of our accommodation types will suit all your living needs and desires.



STUDENT RESIDENCE IN LONDON

Many students who prefer a more independent approach can choose to stay at one of our student residences in Central London. These residences provide the freedom and flexibility many of our students are looking for, right in the heart of London.

Student residences are usually quite basic but always clean and comfortable. There is quite a variation in what they have to offer. Some have en-suite facilities as well as fitness and entertainment facilities as part of the price. There is certain to be something to suit you. Depending on the residence, you may choose either a single room or, if you are coming with a friend, a twin room. Some of our residences offer breakfast or evening meal, and others are self-catering.

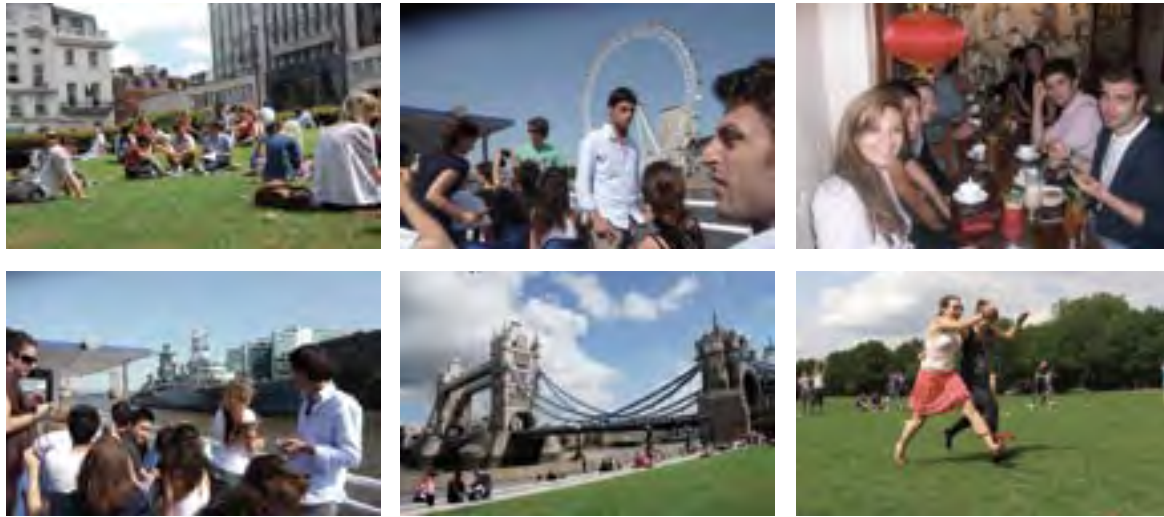
HOMESTAY ACCOMMODATION IN LONDON

We have paid special attention to our homestay accommodation, so families and homes that we have inspected and selected share some common important features.

- The home must be clean and comfortable and enable the student to study quietly.
- The family must be able to provide a good breakfast and/or a good evening meal daily.
- The families must be friendly and helpful and so give the students plenty of opportunity to practise their English outside the classroom and school.
- The location of our homestay accommodation must be where students can easily reach the school by underground or bus with no more than 30-50 minutes travelling time.

HOTELS AND APARTMENTS IN LONDON

SGI can also help arrange your own hotel or apartment accommodation all around Central London. We can recommend a wide range of reasonably priced 2-5 star hotels in the capital. With great rooms and service, student living has never been so comfortable.



EXPERIENCE 'LONDON LIFE' WITH ST GEORGE INTERNATIONAL

Although studying and learning English is the main reason you have come to England, we firmly believe that it is important for you to relax and enjoy yourself as well.

There is no better city than London in which to do this. At SGI we want you to experience British culture and get to know as much of London as possible. Our social organisers will help you make the most out of your stay – however short or long it may be – in the most exciting city in the world.

MAKING THE MOST OF YOUR STAY

Social activities inside the school include quiz nights, regular Monday and Friday parties, themed evenings and discos, as well as visits to pubs, clubs, concerts and the theatre.

We can also arrange sporting activities for you such as swimming, golf, tennis, ice-skating and horse-riding. In good weather we also arrange regular football competitions in nearby Regent's Park.

We believe that SGI's social programme will help you have a memorable time in London, making new friends, meeting lots of interesting people and most importantly, improving your English!

TYPICAL SGI SOCIAL TRIPS

- Boat trip to Greenwich from Tower Bridge
- A visit to Hampton Court Palace including the world famous Kew Gardens
- A walk through Jack the Ripper's neighbourhood in the East End of London
- Theatre trips to Shakespeare's Globe and the West End
- Fun trips like ten-pin bowling followed by a restaurant meal near the school
- A tour of the local pubs of Fitzrovia, popular with writers and artists for over 100 years
- The Tate Modern and then over the 'wobbly' Millenium bridge to St Paul's Cathedral
- Visit Buckingham Palace and near-by St James's Park

There are also visits to lesser known attractions which only Londoners know!

SGI Worldwide is the international partner and affiliate arm of St George International. It was created to satisfy a growing demand from like-minded quality oriented language schools and entrepreneurs throughout the world wishing to connect to us.

SGI PARTNERS

WE HAVE PARTNER ORGANISATIONS IN THE FOLLOWING LOCATIONS.

- FRANCE Montpellier, Nice, Paris, Vichy
- RUSSIA Moscow, Samara
- POLAND Katowice
- GERMANY Berlin, Frankfurt, Munich
- CROATIA Zagreb
- ITALY Florence, Milan, Rome
- SPAIN Barcelona, Madrid, Malaga, Salamanca
- DENMARK Copenhagen

THE NEXT STEP

SGI Worldwide is interested in hearing from potential partners who may be any of the following:

- An already established Language school operating in a city or town somewhere in the world
- A school just starting up
- An individual looking at starting a language school
- An existing company looking at diversifying into the English language teaching market.

Whatever your background we are interested in hearing from you!

If you would like to discuss a partnership with SGI and become part of SGIWorldwide then please call +44 (0)20 7299 1700 and ask to speak to the SGIWorldwide team or e-mail us on sgeworldwide@stgeorges.co.uk

OTHER COMMERCIAL SERVICES

- Partner can act as agent for SGI London (and vice-versa for foreign language students learning the language of the partner's country)
- Partner can sell the SGI E-learning self-study course

COURSES

- Partner connects to SGI courses and course materials (SGI branded or jointly branded): This would include all materials, syllabus and teacher procedural notes.

TRAINING PROGRAMMES

Partner connects to SGI staff training: Staff training is provided for the following areas:

- Delivering Teacher Training
- How to effectively teach.....IELTS, Business English, Academic English, Junior/Teenager English, General English
- Online English tutoring
- Academic Management

SGI WORLDWIDE: WAYS TO CONNECT

Partner schools can connect to as many elements as they wish, from just one item within a category through to everything within all categories.

BRANDING

Partner connects to the SGI brand and logo: Also, part of the branding connection would include a reference and link to the partner on our highly-ranked main website www.stgeorges.co.uk.

RECRUITMENT

- Partner connects to the SGI staff placement service (from Centre Managers to teachers)

SUPPORT

- Partner connects to the SGI academic consultancy service: full academic documentation provided, including tests, needs analyses, teacher guidelines, staffing procedures
- Partner connects to the SGI general management and marketing consultancy service including full documentation of systems and processes



